

**Eastview "Garden Style" and
"Colonial Style Townhouse" Floor Plans**

Garden Style

Approximately 1,260 square feet of comfortable, convenient living all on one floor

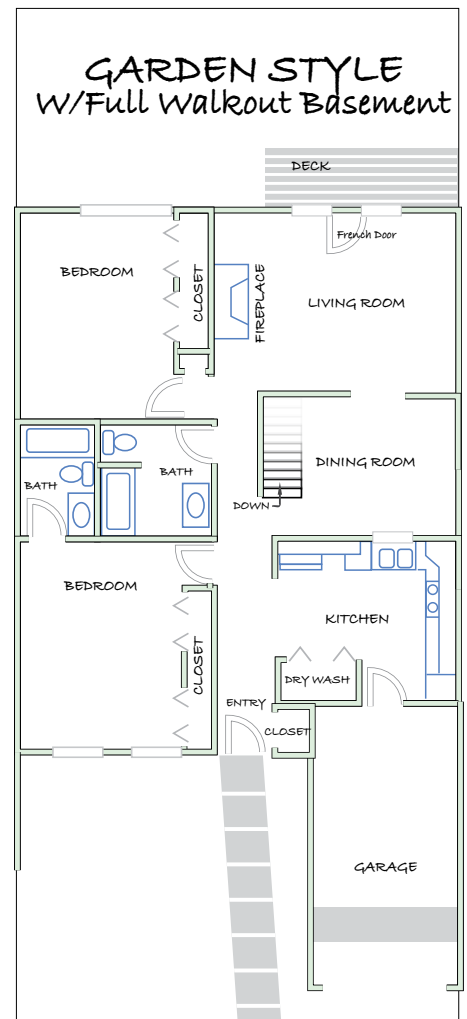
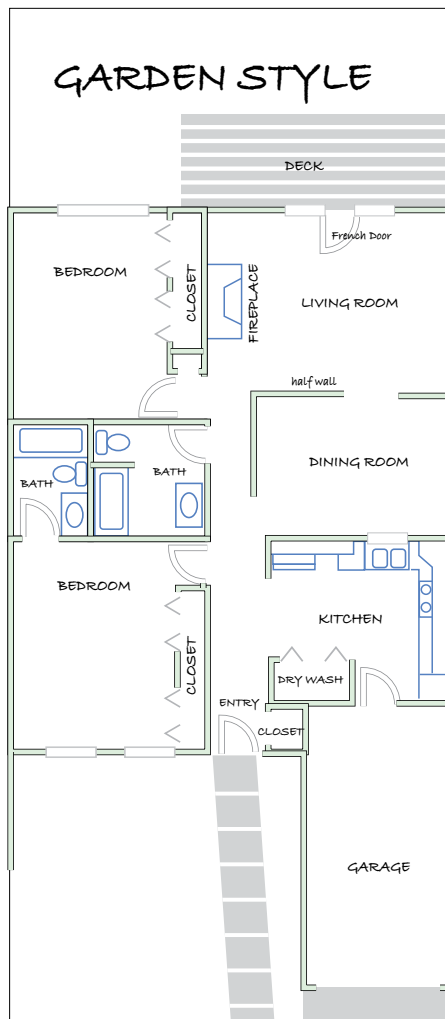
- Bright living room with cathedral ceiling, brick fireplace and French doors.
- Separate dining room.
- Eat-in kitchen with all appliances, pantry, washer/dryer hookups, (microwave optional).
- Two large bedrooms with lighted closets.
- Two full bathrooms.
- Attached garage with private entrance, overhead door and storage.
- Deck (balcony on units with basements).

Additional Features for Garden Style Units With Full Walkout Basements

Garden Style units with walkout basements have an additional 1,200 square foot, full walkout basement for your family room, workshop, etc.

Extra features include

- French doors opening onto exterior balcony.
 - Open stairway from dining room to lower level.
 - Three-flue chimney, two-zone oil/hot-water heat.
 - Flue for wood stove in lower level.
- (Sample Garden Style floor plans show units with and without walkout basements.)



Colonial Style Townhouse

Approximately 1,350 square feet, incorporating space, quality and design unmatched by any other units.

Downstairs

- Slate entry foyer with entry closet and half bath.
- Sunken living room with brick fireplace and French doors to pressure-treated private deck.
- Dining room-kitchen service access.
- Kitchen — all appliances, oak cathedral cabinets, pantry closet, lazy susan, (microwave optional).
- Den/study-off living room.

Upstairs

- Two large bedrooms with large lighted closets.
 - Full bath with private vanity off master bedroom.
 - Full size washer/dryer hookups — convenient 2nd floor.
 - Attached garage with private entrance and easy access to storage area above garage.
- The sample Townhouse floor plan and description is for end units. Most inside units have drop-down ladders to access above-garage storage, and tile on entry and hearth.

